

Sample bottles

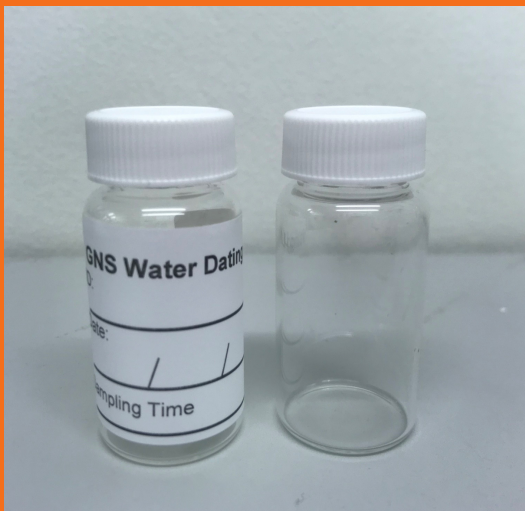
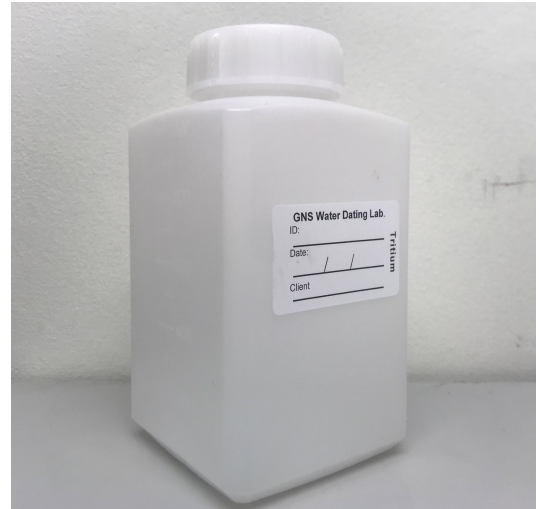
WATER DATING LAB



Tritium

Use any 1L plastic bottle. The bottle must be resealable with a tight-fitting screw top lid.

- Ensure that bottles are closed tightly



Radon

Use a 20ml glass sample bottle with foil lined cap. Can be purchased from Thermo fisher - Catalog number 986541

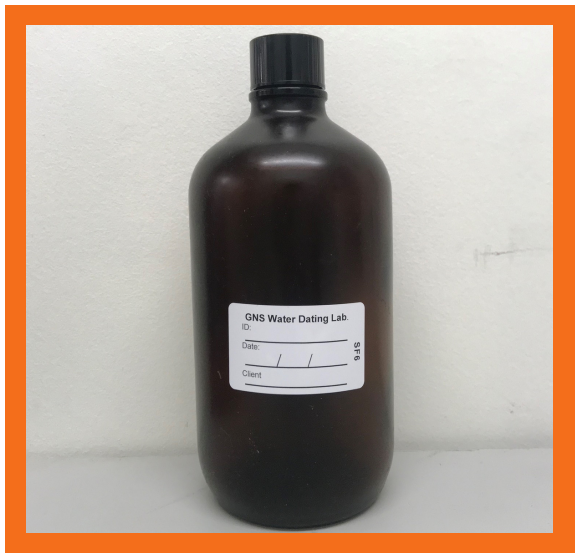
- You will need TWO Radon samples per site
- Make sure there are NO air bubbles
- Ensure that bottles are closed tightly
- Send samples to us immediately on the day of, or day after sampling.

2H & 18O - Stable Isotopes

For 18O we only require 5ml of sample, but you may use a larger bottle. The bottle must be resealable with a tight-fitting screw top lid.

- When collecting the sample fill the sample container to the very top
- Ensure that bottles are closed tightly
- Make sure there are NO air bubbles
- It is best to keep these samples chilled





SF6

You will need the exact bottles we use.

SF6 bottles - Boston Round Bottles – Amber, Safety coated, 1L, 33-430. Can be purchased from Qorpak - item number GLA-00958. For the SF6 bottles, the thread finish (33-430) is important. It isn't the standard thread finish for 1L Boston round bottles, but is narrower and forms a better seal for dissolved gas samples.

SF6 caps - 33-430 Black polyseal cap PC
Can be purchased from Brad-Pak Enterprises - item number CPS-33E-B-PC-PS

- Make sure there are NO air bubbles.
- Ensure that bottles are closed tightly and tape is applied clockwise around the cap.

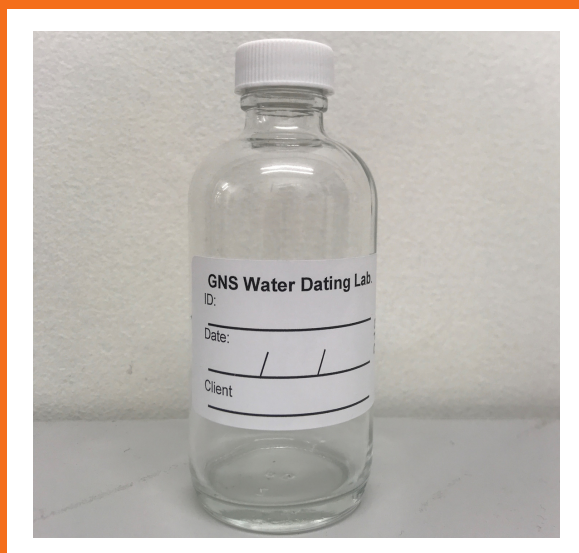
CFCs

You will need the exact bottles we use.

CFC bottles - Wheaton W216832; Clear Boston Round, 125mL, 22-400. Can be purchased from DWK Life Sciences - Catalog number W216832

CFC caps - Wheaton 240804; 22-400 Cap, PP Wht, Foil Lnr. Can be purchased from DWK Life Sciences - Catalog number 240804

- You will need TWO CFC samples per site.
- Make sure there are NO air bubbles.
- Ensure that bottles are closed tightly and tape is applied clockwise around the cap.



¹⁴C - Radiocarbon

Use a glass bottle with a tight-fitting lid or dense laboratory plastic (such as Nalgene) if storage time is anticipated to be short before shipping and analysis. A backup (spare) sample of the water is useful in case analysis needs to be repeated or if breakage occurs. For many water samples, a 250 mL bottle is sufficient. If field testing of the water indicates low carbonate content or pH, then a larger volume of water will be required.

- Keep the sample bottle cool and away from light
- Ensure that bottles are closed tightly